

THE ANNUAL
THE UNIVERSITY MUSEUM



August 2014–July 2015

SIU Southern Illinois University
CARBONDALE

THE UNIVERSITY MUSEUM

MISSION

The University Museum, an educational institution within a larger institution, is committed to serving the Southern Illinois University campus community, the people of Southern Illinois, and visitors to our region. As a steward of Southern Illinois history and with an international collection, the Museum is a portal to understanding the local and world heritage that has made us who we are. We collect, preserve, research, exhibit, and educate using a diverse and engaging range of artifacts and educational methods on behalf of those we serve. As a teaching museum, we offer hands-on opportunities in progressive museum practices and provide leadership to museums across the region. Using both our own collection and bringing in exhibitions and programs from outside, the Museum illuminates the connections between our selves and the arts, humanities, and sciences.

VISION

The University Museum at Southern Illinois University Carbondale is recognized regionally and nationally for its innovative exhibits, educational programming and distinct collections. The University Museum is committed to increasing programs and services to fulfill its mission as a member of the University community and the region. Our diverse collection, multidisciplinary programs and international perspective allow us to be a leader in education and public service. Looking ahead to the next five years, we affirm these vision statements:

We envision the University Museum becoming a strong student-centered museum offering lifelong learning opportunities for our many constituencies.

We envision the University Museum celebrating the diversity of world cultures through exhibits and programming highlighting the arts and humanities collections of the Museum, and through the presentation of traveling exhibitions and programs.

We envision the University Museum fostering pride in Southern Illinois University by showcasing the creativity and scholarship of the faculty and students, both past and current.

We envision the University Museum serving as a force in the educational and cultural development of Southern Illinois by serving schools, organizations and the public with informative and innovative exhibitions and programs.

We envision the University Museum preserving the integrity of its collection through careful conservation and stewardship.

We envision the University Museum using increased technology to better present our world to an ever more sophisticated audience.

We envision the University Museum becoming a more welcoming museum with inviting facilities, more amenable areas for learning and gathering, and convenient parking.

We envision the University Museum serving as a model of museum professionalism in exhibitions, educational programming and care of our collection.

We envision the University Museum nurturing the development of Southern Illinois museums, historical societies and cultural institutions across Southern Illinois by sharing the expertise of the staff, the collection and the facilities of the University Museum.

UNIVERSITY ADMINISTRATORS

Randy J. Dunn, President
Paul D. Sarvela, Acting Chancellor
Jane L. Swanson, Interim Dean,
College of Liberal Arts

SIU BOARD OF TRUSTEES

Major General (ret.) Randal E. Thomas,
Chair, Springfield
Donna Manering, Vice-Chair, Makanda
Judge (ret.) Don Lowery, Secretary,
Golconda
—, Carbondale Student (pending)
Roger Herrin, Harrisburg
Mitch Morecroft, Edwardsville Student
Shirley J. Portwood, Godfrey
Joel Sambursky, Carbondale
Marquita Wiley, Belleville

MUSEUM STAFF

Dona Bachman, Director
Bob DeHoet, Education Program Director
—, Curator of Exhibits (pending)
Susannah Munson, Curator of Anthropology
Eric Jones, Registrar

Admission: Free, donations welcomed

The Museum is located in the north end of Faner Hall. Campus parking is open after 4 p.m. on weekdays and on Saturday and Sunday. Metered parking is located opposite the Student Center.

The Museum is a department of the College of Liberal Arts.

For information: 618/453-5388

Email: museum@siu.edu

Website: museum.siu.edu

 [Facebook.com/universitymuseum](https://www.facebook.com/universitymuseum)

MUSEUM GALLERIES HOURS

Fall semester 2014: Aug. 19–Dec. 12

Spring semester 2015: Jan. 20–May 15

Tuesday–Friday: 10 a.m.–4 p.m.

Saturday: 1 p.m.–4 p.m.

Closed University breaks and holidays

The Museum's Administrative Office (Faner–Room 2469) is open Monday to Friday, 8 a.m.–noon and 1 p.m.–4:30 p.m. Closed University breaks and holidays.

MAILING ADDRESS

The University Museum
Faner Hall 2469–Mail Code 4508
Southern Illinois University
1000 Faner Drive
Carbondale, IL 62901

ON THE COVER

Sarah Capps, “Big Sky,” 2009, colored pencil and ink, from her exhibit.

A YEAR TO REMEMBER

Dona Bachman

Director of the University Museum/Museum Studies Program



Me at the Bill and Melinda Gates Foundation in Seattle. I am standing in front of a spectacular tapestry made of metal bottle tops by Ghanaian artist El Anatsui during a reception for museum CEOs at the AAM conference.

What a year this has been—a new dean, a new chancellor, a new president! The University Museum, too, has seen great change. We bid a fond goodbye to Nate Steinbrink, who has given the Museum outstanding service as its Curator of Exhibits. Nate joined the Museum staff in 2003 as a graduate assistant. Upon his graduation from the SIU School of Art & Design with a MFA in Glass in 2005, he became our exhibits designer. Along the way, Nate brought exciting design to exhibitions, increased emphasis on technology and green design, and always, a Midwestern kindness and patience that made him a delight to work with. Good luck in your next venture, Nate!

How will a staff of four cover Nate's duties? Professor Emeritus of Theater Design Ron Naversen is stepping in to teach Nate's fall exhibits course, while we do a search for Nate's replacement. Ron is also a long-standing Museum Patron. Thank you, Ron!

Museum improvements cheered us throughout this year. Late summer saw the completion of the North Hall renovation, giving the Museum a new education space, the New Continuum Gallery, and an enhanced Auditorium complete with the latest bells and whistles. The South Hall received new doors, helping the Museum to better encapsulate its environment and sparing our student workers and artifacts fluctuations in temperature and humidity.

The most profound change the Museum underwent was the installation of two new climate control units at the Archive Building, replacing a single, over-worked unit on its last leg. These tremendous environmental changes were made possible by funding from the SIU Center for English as a Second Language. According to Director Cheryl Ernst: "We are delighted to help the University Museum preserve its diverse collections. Our international students enjoy finding something from their home countries in the University Museum."

The pleasures of my position are many, and they more than balance the headaches I sometimes encounter. I recall with great fondness the party hosted by SIU emeritus professors Ed Shay (Art) and his wife, Casey Ginther (Music), for Tom and Linda Walsh. Getting to know Tom and Linda, and working with John and Lucia Hollister, Bill Rose and Edna Patterson-Petty, made this past year memorable. A special thank you to

Kathy Belletire for volunteering to bring order to the Museum's Library files. Kathy and Undergraduate Assistant Kimberley Borgerson have made the Museum Library totally serviceable. I could write a long column on Museum Patrons stepping up to help the University Museum. On a hot, muggy morning, Museum staff attended an auction that featured two colored glass windows from Old Main and an unfinished sculpture by West Frankfort wood carver Fred E. Myers. Surrounded by supportive friends, such as Judy and Will Travelstead and Renée and George Mavigliano, the Museum purchased both. Afterward, the Maviglianos donated the funds for the purchase of the sculpture.

Among the most pleasant memories of this past year was the donation of an historic watch, probably the only surviving artifact of Carbondale College/Southern Illinois College, by Marion and Polly Winkler Mitchell to the University Museum. The watch was given to the Rev. Clark Braden, President of Southern Illinois College, in 1868. I was honored to accept the watch at the unveiling of the Illinois State Historical Society's marker commemorating Carbondale's long-standing connection to higher education on May 30. You can see this wonderful watch that Marion cherished in the Exquisite Treasures exhibit.

Professionally, this has been an exciting year. When Doris Kearns Goodwin came to campus to speak, Matt Baughman, from the Chancellor's Office and formerly of the Paul Simon Public Policy Institute, and I had the opportunity to show her selections from the Jerome M. Mileur Presidential Memorabilia Collection in the Museum. In May, I attended the American Alliance of Museums' Annual Meeting in Seattle, with side trips to Tacoma, Washington, and Victoria, British Columbia. All in all, a good year to have finished, as we look forward to the next school year.—Dona



Nate shares his exhibits report with volunteers and patrons.



Polly and Marion Mitchell holding her Scherenschnitte (paper cutting) interpretation of the presentation of the Southern Illinois College watch to the Rev. Clark Braden and me holding the watch before the Illinois State Historical marker in front of the Carbondale Public Safety Center.



Matt Baughman, Doris Kearns Goodwin and I look at the Jerome M. Mileur Collection of Presidential Memorabilia at the University Museum.

CONTINUING EXHIBITIONS



DARREN SCHROEDER: LANDSCAPES FROM THE ROAD

Exhibit: through Sept. 19

Closing reception: Sept. 12, 4–7 p.m.

Darren Schroeder takes us through the back roads of Southern Illinois, discovering the human impact on even quiet places. This was his MFA thesis exhibition for the College of Mass Communication and Media Arts.

Culver's Sign



NEW DEAL ART NOW: A REFRAMING OF THE ARTIFACTS OF DIVERSITY

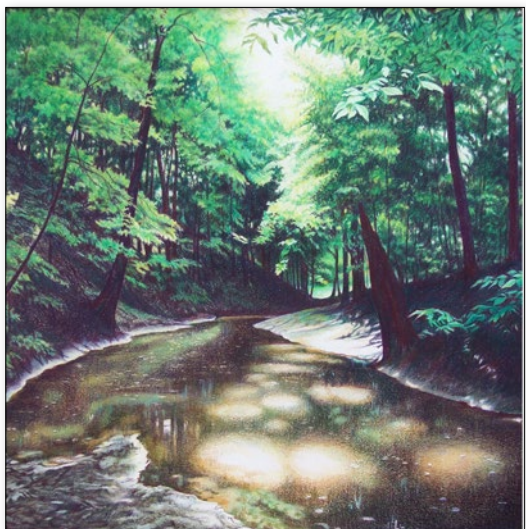
Curated by Jessica Allee

Exhibit: through Nov. 1

Reception: Sept. 12, 4–7 p.m.

Jessica Allee touches on the wide range of media, genres and artists represented in the University Museum's WPA collection, as well as in borrowed works from the Illinois State Museum and the Southside Community Art Center in Chicago. Archival video and audio recordings are also included. This was her MA Art History thesis exhibition, School of Art and Design, College of Liberal Arts. This exhibit is a fine example of how students make use of the Museum.

EXHIBITIONS FALL 2014



"Heat," colored pencil, 2008

SARAH CAPPS: THE SOUL OF LANDSCAPE AND OTHER EXPLORATIONS

Exhibit: Sept. 5–Dec. 12

Reception: Sept. 12, 4–7 p.m.

This retrospective exhibit includes not only Sarah Capps' well-known paintings, but also her work in jewelry-making and metalsmithing.

All of her works reflect in some way the Southern Illinois landscape, in particular a creek and woods that run through her property. She dedicates this exhibition to the memory of her friend and mentor Brent Kington.



"Spirit Bird," necklace, 2011

TO THE MOON AND BACK: RICHARD JUREK'S APOLLO LUNAR ARTIFACTS

Exhibit: Aug. 19–Dec. 12

Reception: Sept. 12, 4–7 p.m.

Rich Jurek is a two-degree alumnus of SIU. He is a published poet and a marketing executive, but what really tickles his fancy is his impressive collection of space memorabilia, which he has amassed since the 1970s. The collection ranges from a checklist from the last moon mission to a trove of autographed \$2 bills astronauts carried for good luck. The 45th anniversary of the Apollo moon landing was July 20, 2014.

Catch the space bug with us and see SIU's College of Engineering's own contribution: a moon buggy SIU students have successfully raced at the U.S. Space and Rocket Center in Huntsville, Alabama.



EXQUISITE TREASURES FROM THE MUSEUM'S COLLECTION

Curated by Dona Bachman

Exhibit: through December 2015

Reception: Sept. 12, 4–7 p.m.

There are many objects in the University Museum's 70,000+ collection that are not often on exhibit. They are not simply "in storage" but are cared for, researched, shared with other museums and preserved for future generations. In this exhibit, we bring out some of those special objects.



FANER AT 40: CELEBRATING 40 YEARS OF HISTORY and CONTEMPORARY PHOTOGRAPHS BY DAN OVERTURF

Curated by Eric S. Jones

Exhibit: Sept. 5–Spring 2015

Reception: Sept. 12, 4–7 p.m.



Faner at 40 acknowledges Faner Hall's first four decades as one of the most dominant buildings on the SIU campus. The exhibit will explore various early master plans for campus expansion that led up to Faner's construction, as well as the history of what is now the Faner site. Outstanding aerial photographs of the site before, during and after construction will also be featured, as well as new photographic images of the building made by Dan Overturf.



THE MILEUR COLLECTION: THE ROOSEVELTS

Exhibit: Aug. 19–Dec. 1

Reception: Sept. 12, 4–7 p.m.

WSIU  
PUBLIC BROADCASTING

Jerome M. Mileur's rich collection of presidential political memorabilia provides an almost inexhaustible record of our country's leadership. This selection focuses on the Roosevelts in conjunction with WSIU-TV's presentation of Kens Burns' documentary on the political dynasty.

READY MADE ART

Curated by Bob DeHoet

Exhibit: Sept. 12–Dec. 12

Reception: Sept. 12, 4–7 p.m.



Students from Anna and Massac Junior High Schools along with Eldorado and Zeigler-Royalton High Schools share their artworks. Museum Educator Bob DeHoet spent Spring 2014 visiting the schools and working with these students and their art teachers. Funding for this exhibition was provided through a grant from Carbondale Community Arts.



SIMS: SOUTHERN ILLINOIS METALSMITHS SOCIETY EXHIBITION

Exhibit: Oct. 10–25

Reception: Oct. 17, 4–7 p.m.

The annual exhibit brings the best of contemporary metalsmithing to campus. The exhibition is centered around a weekend of metal, including workshops and an auction to benefit the School of Art and Design's metalsmith program. For detailed information, contact dan.neville@siu.edu.

C-4: STUDENT SCULPTURE

Exhibit: Nov. 4–21 Reception: Nov. 14, 4–7 p.m.

C-4, the sculpture students, give us an exhibit of their work.

SIU MFA PREVIEW

Exhibit: Nov. 7–Dec. 6 Reception: Nov. 14, 4–7 p.m.

Each year, the Museum presents a preview of a work from each Master of Fine Arts candidate's thesis show that will take place in 2015.

EXHIBITIONS SPRING 2015



CLOTH AS COMMUNITY: HMONG TEXTILES IN AMERICA

Exhibit: Feb. 6–March 6

Hmong *paj ntaub* (flower cloth) is one of the world's great textile traditions. Yet this complex art wasn't widely known outside of Asia until the after Vietnam War. This exhibit presents 28 textiles created by Hmong women in the United States. The traveling exhibit is circulated by ExhibitsUSA for the Mid-America Arts Alliance in partnership with the National Endowment for the Humanities. University Museum Patrons are bringing this exhibit to Carbondale.

IMAGINED WORLDS: DARWIN PAYNE MODELS AND WPA DIORAMAS

Curated by Bob DeHoet

Exhibit: Jan. 20–Summer 2015

Separated by many years, the Southern Illinois pioneer life dioramas made by the WPA and the theater models made by Darwin Payne, share a common effect: They transport us to imagined worlds.



WPA diorama, "Wash Day"

Set design model for
"Pirates of Penzance"
by Darwin Payne.

PHOTOGRAPHS BY BOB BENYAS: CELEBRATING THE FAMOUS AND THE LOCAL

Exhibit: Jan. 20–March 6

Bob Benyas (1923–2014), Detroit photographer, graduate of Chicago's Institute of Design and student of Laszlo Moholy-Nagy, recorded the lives of the famous, from musicians to presidents and sports figures, in his illustrious professional career. From 2005 until 2012 he brought his talent to Southern Illinois, when he visited his son, Ed Benyas, and family. Maestro Ed Benyas is the conductor of the Southern Illinois Symphony and director of the Southern Illinois Music Festival. Bob Benyas captured the magic of the orchestra and its audiences in his Southern Illinois photographs.

KARL KELPE'S WHEELER HALL LIBRARY MURALS: HALF-SIZED DIGITAL RESTORATIONS

Exhibit: May 1–Dec. 11, 2015

From 1903 to the opening of Morris Library in 1956, Wheeler Hall housed the University's library. Decorating the Wheeler Hall Library were around a dozen murals by WPA worker Karl Kelpe. The murals were painted on canvas and attached to the walls. When Morris Library was built, the murals were removed from Wheeler, rolled up and eventually given to the University Museum. To restore these murals based on Illinois scenes would take thousands of dollars, but the Museum has been able to record their impressive quality through digital restoration.



The only known photo
of the murals *in situ* at
Wheeler Hall.

A mural as it
stands today.

EXHIBITIONS SUMMER/FALL 2015



CAROL GOOD: MEMORIES OF ITALY

Exhibit: June 19–Sept. 5, 2015

Artist and Museum Patron Carol Good's paintings will take you on an excursion to the beautiful country of Italy.



Andy Warhol (1928–1987), "Hans Christian Andersen," 1987, Screenprint. Extra, out of the edition. Designated for research and educational purposes only. © The Andy Warhol Foundation for the Visual Arts, Inc.

WARHOL

Exhibit: July 10–Dec. 18, 2015

In 2014, the Andy Warhol Foundation for the Visual Arts gave the University Museum 10 screen prints. They nicely complement the 155 Warhol photographs the Foundation gave us in 2008. In this exhibit, we present the 10 new works and selections from the photographs.

KYLE KINZER: COLLABORATIONS

Exhibit: Sept. 8–Dec. 12, 2015

Kyle Kinzer's masterful woodworking is known throughout the country. In this exhibition, he collaborates with colleagues in other media. Included collaborators are the late L. Brent Kington, Michael Onken, Aldon Addington, Fran Jaffe and others.

"Painted Tabernacle No. 2"
by Kyle Kinzer, with painted
panels by Michael Onken
(photo by Todd Davis).



BARRY WOLF: A RETROSPECTIVE

Exhibit: TBA

SIU Radio and Television alumnus Barry Wolf has spent the last 30+ years directing commercials and films for America's largest corporations, but since the 1990s he has also pursued fine art photography. He will share with us a retrospective of his photographic career.

"Lone Tree, Diversey Shore, Chicago" by Barry Wolf



BEN GELMAN'S RAILROAD PHOTOGRAPHS

Curated by Steve Mueller

Exhibit: Sept. 1–Dec. 12, 2015

Working with photojournalist Ben Gelman's negatives in Morris Library's Special Collections, Steve Mueller has printed a selection of railroad photos Gelman shot in 1959 as part of the *Southern Illinoisan's* coverage of the last steam-powered trains' runs, shortly before all mainline steam ended on the Illinois Central Railroad. The trains were based out of the Carbondale roundhouse.

COCKTAILS, CANAPÉS AND COLLECTIONS

The Patrons of the University Museum
are invited to a special viewing of the
new climate control rooms at the
Museum Archive Building

Thursday, Dec. 11
4 p.m.

Please RSVP (618/453-5388) by Dec. 1

*If you haven't become a Patron yet,
please use the envelope in the middle
of the Annual.*

LOOKING AHEAD...

The University Museum has a small, charming Civil War painting of a steamboat that used to ply the waters that surround Southern Illinois. Unfortunately, it has suffered grievously over the years through lost paint, weakened varnish and almost a century of dirt. We asked the Conservation Center in Chicago for an estimate on restoring this collection gem. At the low end, it may cost between \$2,500 and \$4,000.



We would like to set up this Conservation Initiative to honor recently retired longtime curator Lori Huffman. If you are interested in helping the Museum with this tribute, please contact Dona Bachman at dbachman@siu.edu or 618/453-5388. Rachel and Stuart Fischhoff have stepped forward with the first contribution to kick off the Conservation Initiative with a donation of \$1,500. Won't you join them?

WHERE DOES OUR NON-SALARY OPERATING MONEY GO? TOTAL: \$33,526 (FISCAL YEAR '15)

Marketing: \$6,714

Exhibit postcards: \$2,480
General postage: \$1,120
Advertisements: \$2,912
Miscellaneous: \$202
*Newsletter and receptions
paid for by the Friends of the
Museum*

Exhibits Program: \$4,392

Supplies (paint, lumber,
software, duplicating): \$2,750
Travel to pick up
artifacts/staff trips: \$500
Plotter paper and supplies: \$2,142

Education Outreach: \$1,250

Supplies, software, duplicating: \$450
Trips to area schools: \$300
Arts Education Festival use
and Shryock sound system: \$500

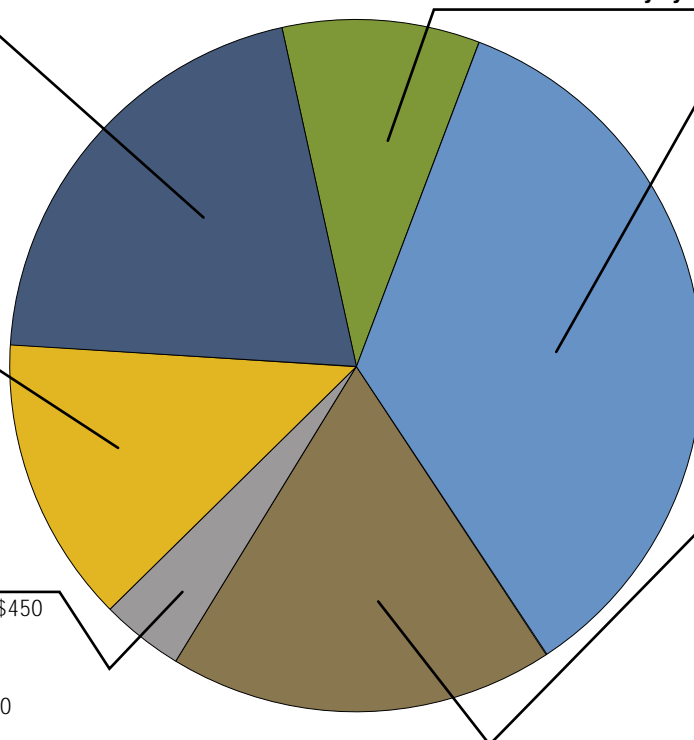
Security System and Telephone: \$3,015

Administration: \$11,305

Supplies for staff
and student employees: \$800
Fine arts insurance: \$3,600
Association dues: \$985
Technology fee
charged by university: \$5,145
Copier charges: \$500
American Alliance of Museums
directory listing: \$275

Collections Responsibilities: \$5,850

Storage supplies: \$1,000
Collection database software licenses: \$3,750
University server use charge: \$350
Maintenance of climate control units: \$750



EDUCATION PROGRAM

OUT AT THE ARCHIVE!

The University Museum will offer a Learning in Retirement class in February and March. After a brief overview of the Museum in Faner, class participants will head out to the Archive, where they'll learn about the care of the Museum's 70,000 objects. They'll be involved with inventory, artifact packing and other tasks of the working museum. Susannah Munson, Curator of Anthropology, will lead the class in activities.

COLLECTIONS PROGRAM

MUSEUM LOAN

Twenty photos from the University Museum's "The Joliet Prison Photographs: 1890-1930" exhibition by Richard Lawson will travel to Redding, Pennsylvania, to be featured in an exhibition at the Freedman Gallery at Albright College from Dec. 2 to Feb. 1. The request for the loan came from David Tanner, Director of the Center for the Arts, who earned a Master of Public Administration degree with a Museum Emphasis from SIU in 1999.

Richard Lawson received his B.S. in photography from Southern Illinois University and his M.F.A. in photography from the University of Illinois. He taught photography at Southern Illinois University from 1977 to 1981 and now lives in Arizona. He is not to be confused with Richard Lawson, SIU Professor Emeritus (English) of Carbondale, who is also a photographer.

IN MEMORIAM

NOLAN WILSON (1954-2013)

The Museum will miss Nolan's beautiful floral arrangements and his friendship.

MARIANNE WEBB (1936-2013)

A renowned organist, Marianne Webb donated a number of her elegant recital gowns to the University Museum.

IMOGENE REESE (1914-2014)

Mrs. Reese presented the Museum with an oil painting, American artist Will Freund's "Our Daily Bread," in 2004.

DAVID KENNEY (1922-2014) Professor Kenney will be missed across the university and community. His passion for history resulted in several gifts to the Museum.

ROBERT PULLIAM (1924-2014)

Dr. Pulliam was always supportive of the Museum's efforts to preserve University history.

KEN GRAY (1924-2014) More than 40 items from U.S. Congressman and Southern Illinois booster Ken Gray's museum came to us in 2008, ranging from political buttons to gavels and a moonshine still.

DAVID E. CHRISTENSEN (1921-2014)

SIU Professor Emeritus of Geography, author and University Museum Patron Dave Christensen was interested in everything to the end. We last saw Dave at our Spring Luncheon. Dave gave the Museum a pony skin coat that belonged to his grandmother.

MUSEUM DONORS: 2013-2014

Platinum Donors

Contributions of \$1,000 or more

Rachel and Stuart Fischhoff, Carbondale, Illinois
Karin and Richard Jurek, Dyer, Indiana

Gold Patrons of the Museum

Contributions of \$500 or more

Deanie and Primo Angeli, Truckee, California
Dona Bachman and Aldon Addington, Carbondale, Illinois
Patricia Guyon, Carbondale, Illinois
Robin and John Haller, Carbondale, Illinois
Jo and Ted Harvey, Grafton, Illinois
Renée and George Mavigliano, Carterville, Illinois
Jean and Robert Pulliam, Makanda, Illinois
Thyra and Herb Russell, Carbondale, Illinois
Ed Shay and Casey Ginther, Carbondale, Illinois*
Blanche Carlton Sloan, Carbondale, Illinois
Carolyn Snyder, Carbondale, Illinois
Linda and Thomas Walsh, San Jose, California

Patrons of the Museum

Contributions of \$100 to \$499

Paulette Aronson, Cobden, Illinois
Joni Beth Bailey, Murphysboro, Illinois
Ellen and Richard Bradley, Carbondale, Illinois
Claudia and William Broom, Carbondale, Illinois
David Christensen, Carbondale, Illinois
Laura and Bryan Cobin, DuQuoin, Illinois
Lilly E. Crane, James R. Cather, Carbondale, Illinois
Ronda and Randy Dunn, Murphysboro, Illinois
Mary Luh Fraunfelder, Carterville, Illinois
Carol and Larry Good, Carbondale, Illinois
Pat and Ron Grimmer, Carbondale, Illinois
Anne Hebert, Chicago
Bonnie and Roy Heidinger, Carbondale, Illinois
Linda and Richard Helstern, Carbondale, Illinois
Anne Hill, Carbondale, Illinois
Lucia and John Hollister, Chicago
Sue and John Howell, Carbondale, Illinois*
Lori Huffman, Anna, Illinois
Candis and Fred Isberner, Carbondale, Illinois
Dede Ittner, Carbondale, Illinois
Gloria and Rodney Jones, Carbondale, Illinois*
Kimberly Kempf-Leonard and Charles Leonard, Murphysboro, Illinois*
Cheonae Kim, Murphysboro, Illinois
Diana Kington, Makanda, Illinois
Gayle Klam, Carbondale, Illinois
Marion and Marvin Kleinau, Carbondale, Illinois
Barbara Lesar, Carbondale, Illinois*
Michael Lillich, Champaign, Illinois
Carl W. Lutes, Carbondale, Illinois
Richard Mawdsley, Carterville, Illinois*
Kristine and Patrick McGuire, Carbondale, Illinois
Herb Meyer, Carbondale, Illinois
Shirley Miles and Dave Ganame, Carbondale, Illinois*
Polly Winkler-Mitchell, Marion Mitchell, Carbondale, Illinois
Carolyn and Christian Moe, Carbondale, Illinois
Ron Naversen, Makanda, Illinois
Robynn and Jack Nawrot, Cobden, Illinois
Helen Naumer, Murphysboro, Illinois
Iver Nelson Jr., Chicago
Bill Niemeyer, Carbondale, Illinois
Bob Paulson, Cobden, Illinois*
Anne and Nicholas Phillips, Carbondale, Illinois*
Susie and Ed Phillips, Murphysboro, Illinois*
Elizabeth C. Pickering, Arlington, Virginia
Jo and Glenn Poshard, Murphysboro, Illinois
The Sarvela Family, Carbondale, Illinois
Barbara Jane Schwartz, Makanda, Illinois
Connie and Mike Shanahan, Carbondale, Illinois
Emma Smith, Carbondale, Illinois
Karri and Howard Spiegel, Buffalo Grove, Illinois
Nancy Taylor, Murphysboro, Illinois
Eugene Timpe, Carbondale, Illinois*
Judy and Will Travelstead, Cobden, Illinois
Joyce Webb, Carbondale, Illinois
Olga Weidner, Carbondale, Illinois*
Laraine Wright, Carbondale, Illinois
*Donors to Thomas Walsh exhibition

SNAPSHOTS



ROW 1: Wes Stoerger accepts the “Outstanding Museum Student of the Year” award from Margaret Loomis, president of the Southern Illinois Association of Museums. Mike Chervinko, Edna Patterson-Petty, Najjar Abdul-Musawwir and Hoyeon Chung at a reception. Kelsey Wright, curator of the Thomas Walsh exhibit. Wall hanging by Edna Patterson-Petty donated to the University Museum.

ROW 2: Museum Studies students/Art History students sell food at the Eco Fair. Kyle Clymore arranges Japanese *tsukas* for exhibit. Father Joseph Brown and Leo Gadzekpo at a reception.

ROW 3: Cobden Applenockers poster designed by Museum Educator Bob DeHoet for Union County Museum. Tom Walsh visits with Shirley Meyer at his reception. Student teachers unite at Museum: Amanda (Heine) Searby, Kyle Clymore, Sue Gindelsparger (art teacher at Zeigler-Royalton) and Merry Lanker. Curator Susannah Munson kicks up her heels in newly renovated and climate-controlled art storage.

ROW 4: Eric Jones and Josh Hale plan the Faner exhibit. Tom Cerny and his mother, Betty Cerny, in the “Trunk Show” exhibit in front of Betty’s great-grandparents’ trunk that was donated to the Museum in 1942. The Meret Gallery, a student gallery created by Nate Steinbrink.

SIU
CARBONDALE

THE UNIVERSITY MUSEUM
FANER HALL 2469—MAIL CODE 4508
SOUTHERN ILLINOIS UNIVERSITY
1000 FANER DRIVE
CARBONDALE, IL 62901

Non-Profit Org.
U.S. Postage
PAID
Permit No. 15
Carbondale, IL



Sarah Capps, "Nothing Gold Can Stay,"
watercolor, 2012.



WHEN THE LEAVES FALL IN EGYPT

When the leaves fall in Egypt
Friend, you should come down,
When the frost has painted
With gold and with brown
When the wind in the trees
Sings its old melodies,
When the leaves fall in Egypt
That's the time to come down.

By Ben H. Smith (verse one)
Published in *Egyptian Key*, October 1944.