

The Annual

The University Museum



July 2012–June 2013

SIU Southern Illinois University
CARBONDALE

The University Museum

Mission

The University Museum serves Southern Illinois University Carbondale and its many constituencies, near and far, as a steward of the past and a gateway to the future. We collect, preserve, research, display, and educate using a diverse and engaging range of artifacts and objects and educational methods. The Museum illuminates the local and world connections behind the arts, humanities, and sciences. As a teaching museum, we offer hands-on opportunities in progressive museum practices and provide leadership to museums across the region.

Vision

As one of the oldest museums in Illinois, chartered in 1869 with the University and opening in 1874, the University Museum of Southern Illinois University Carbondale is recognized locally, nationally and internationally for its innovative educational programming and distinct collections. As we look forward to the future, the University Museum is committed to increasing programs and services to fulfill our mission as a member of the University and larger Southern Illinois community.

Our diverse collections, multidisciplinary programs and international perspective allow us to be a regional and national leader in education, research, and public service. Looking ahead, we affirm these vision statements:

We envision the University Museum becoming a strong student-centered museum offering life-long learning opportunities for our many constituencies.

We envision the University Museum celebrating the diversity of world cultures through exhibits and programming highlighting the arts and humanities collections of the Museum and through the presentation of traveling exhibitions and programs.

We envision the University Museum fostering pride in Southern Illinois University by showcasing the creativity and scholarship of the faculty and students, both past and current.

We envision the University Museum serving as a force in the educational and cultural development of Southern Illinois by serving schools, organizations, and the public with informative and innovative exhibitions and programs.

We envision the University Museum using increased technology to better present our world to an ever more sophisticated audience.

We envision the University Museum becoming a more welcoming museum with more inviting facilities, more amenable areas for learning and gathering, and convenient parking.

We envision the University Museum serving as a model of museum professionalism in exhibitions, educational programming, and care of our collections.

We envision the University Museum nurturing the development of museums, historical societies, and cultural institutions across Southern Illinois by sharing the expertise of the staff, the collections, and the facilities of the University Museum.

ON THE COVER

Herbert Simon, *Spill*, 1990, aluminum and rusted steel.
Gift of the artist. See Recent Acquisitions, page 10.

UNIVERSITY ADMINISTRATORS

Glenn Poshard, President
Rita Cheng, Chancellor
Kimberly Leonard, Dean,
College of Liberal Arts

SIU BOARD OF TRUSTEES

John Simmons, Chair
Ed Hightower, Vice Chair
Mark Hinrichs, Secretary
Jesse Cler, SIUC Student
David Hamilton, SIUE Student
Roger Herrin
Donald Lowery
Donna Manering
Marquita Wiley

MUSEUM STAFF

Dr. Dona Bachman, Director
Bob DeHoet, Education
Program Director
Lori Huffman, Curator
of Collections
Nate Steinbrink, Curator
of Exhibits
Eric Jones, Registrar
Susannah Munson, Curator
of Anthropology (IMLS grant)

Admission: Free, donations welcomed

The Museum is located in the north end of Faner Hall. Campus parking is open after 4 p.m. on weekdays and on Saturday and Sunday. Metered parking is located opposite the Student Center.

For information: 618/453.5388

E-mail: museum@siu.edu

Website: www.museum.siu.edu

 [Facebook.com/universitymuseum](https://www.facebook.com/universitymuseum)

MUSEUM GALLERIES HOURS

Fall Semester 2012: August 16–December 8

Spring Semester 2013: January 22–May 4

Tuesday - Friday: 10 a.m.–4 p.m.

Saturday: 1 p.m.–4 p.m.

Closed University breaks and holidays

The Museum's Administrative Office (Faner - Room 2469) is open Monday to Friday, 8:00 a.m.–Noon and 1 p.m.–4:30 p.m. Closed University breaks and holidays.

MAILING ADDRESS

The University Museum
Faner Hall 2469 - Mail Code 4508
Southern Illinois University
1000 Faner Drive
Carbondale, IL 62901

FROM THE DIRECTOR



Barbara Blacklock, Chancellor
Rita Cheng, and Dona Bachman.

Three major traveling exhibits came to the Museum this year: *American Spirit* from the Wells Fargo corporate art collection was made possible by Barbara Blacklock and Daniel Lampe of Carbondale's Wells Fargo Advisors.

Iron 2010 came to the Museum from the National Metals Museum in Memphis thanks to the support of the Southern Illinois Metalsmith Society and the School of Art and Design.

The Way We Worked from the Smithsonian Institution was brought in by Carbondale Community Arts and the Illinois Humanities Council. Gayle Klam and Mary O'Hara served as chairs.

Dona Bachman
Director of the University Museum/Museum Studies Program

It is a pleasure to send you this annual update, even as it is a challenge to capture all that has gone on and will go on at the University Museum. Through the co-operative efforts of our many friends, the University Museum has continued to grow, improve, and even flourish.

This 2011–2012 school year brought us a new dean in the College of Liberal Arts, Dr. Kimberly Leonard. The Museum was also able to welcome Eric Jones as the Museum's Registrar.

To better use our space, the Museum has created the Continuum Gallery in the room formerly occupied by the store. It will feature the work of area students on a regular basis. Another space, the area between Galleries One and Two in South Hall, has become the Alcove Gallery, ideal for small, focused displays.

National exposure came to the University Museum on March 26, 2011 via my appearance on National Public Radio's live broadcast of Michael Feldman's *Whad'ya Know?* at Shryock Auditorium. I went armed with some challenging artifact identifications. Who would have guessed what a calf weaner and a sugar devil looked like?

Major support also came from the Friends of the University Museum, as it has for over forty years. In addition to their regular support of our wonderfully social receptions, the Friends helped us frame artworks that had never before been shown. They also helped support the publication of *Art Alfresco: Art Across the Campus*.

Summer 2012 saw us to the halfway point of a major grant to photograph objects in the collection for presentation online. What a pleasure it is to see so many grant-funded student workers undertaking this task and bringing life to the usually understaffed Museum Archive building.

On the impact of museums, Richard Fortey writes, "I believe profoundly in the importance of museums. I would go so far as to say you can judge a society by the quality of its museums."

You can judge the importance of the University Museum at Southern Illinois University Carbondale by the quality of its friends.

Thanks to all of you.

IN MEMORIAM



The art world lost a true friend in July with the death of **HERBERT VOGEL** (1922–2012). With his wife Dorothy (shown in a gallery in 1995), Herb developed

an outstanding collection of art reflecting the New York art scene from the 1960s to the 1990s. So large was their collection, that with assistance from the National Gallery of Art in Washington, DC, the Vogels were able to give fifty works from their collection to each of the fifty states. The University Museum was the proud recipient of the selections given to Illinois from the 50 Works for 50 States project.

LOUIS "LOU" FREITAG died on December 12, 2011. He was an avid historian and loved to talk about history and politics. His presence in Learning in Retirement classes enlivened many subjects, including museum history.

JOHN "JACK" HAYWARD died on September 24, 2012. An outstanding leader in the Carbondale community and the University for many years, the Museum remembers the involvement of Jack and his wife Lois in a number of exhibitions. Recently the Haywards donated a number of artworks to the Museum.

EXHIBITIONS **FALL 2012**



Beth Van Hoesen, *Pike*, 1995

LIONS & TIGERS & BEARS, OH MY!

curated by Rachel Fischhoff

Exhibit: August 16 - December 8

Museum patron Rachel Fischhoff invites us to look at animals in a humorous setting. She combines her perspective with those of area children who provide their artistic views of animals doing funny things. A number of prints by Beth Van Hoesen are featured.



Primo Angeli, Poster
for 50th Anniversary
of the Golden Gate
Bridge, 1987

PRIMO ANGELI

A Retrospective of Posters, Design & Brand Identity

Exhibit: September 14 – December 8

Master designer Primo Angeli grew up in West Frankfort, Illinois, earned two degrees at Southern Illinois University Carbondale, and became an internationally known designer working in San Francisco and Italy. Gathered here are Primo's posters for the Olympics, celebratory anniversaries, as well as brand packaging and insights into the world of the commercial artist.

“SENSATION, REVELATION!” THEMES & VARIATIONS IN COLOR & FORM

curated by Bob DeHoet

Exhibit: August 16 – December 8

Bob DeHoet, the Museum's Education Director, has curated this show from the Museum's print collection. Featured artists include Josef Albers, Richard Anuszkiewicz, Patrick Caulfield, Patrick Heron, John Hoyland, Patrick Hughes, Kenneth Martin, and Victor Vasarely, all modern masters of multiple studies of color and form.



SIMS' 5TH ANNUAL FORM, FABRICATE, FORGE

Exhibit: September 21 – October 20

The Southern Illinois Metalsmiths Society never ceases to present metal in a new light. From jewelry to sculpture, from representational to abstract, you'll be impressed by the variety. At left, the SIMS participants take a break in front of Faner Hall.

13th Annual Carbondale Community Arts' Biennial **EXTRAORDINARY TALENT COME HOME**

Exhibit: September 28 – October 27

Reception: October 19, 4 – 7 p.m.

Having presented biennial art shows with Carbondale Community Arts since 1988, the Museum welcomes back the extraordinary talent CCA has nurtured as it celebrates its 25th Anniversary Year in 2012. Congratulations to CCA and to the featured artists: Preston Jackson, Frank Brown, JoAnna Johnson, and others.



Works by JoAnna Johnson and Preston Jackson

POLITICAL CARTOONS FROM THE JEROME M. MILEUR COLLECTION

Exhibit: September 28 – December 8

Program and Reception: October 26, 6 – 8:30 p.m.

Alumnus Dr. Jerome Mileur's gift of his presidential memorabilia collection to the Paul Simon Public Policy Institute and the University Museum grows as Jerry continues collecting all things political. This exhibit looks at other campaigns that make the 2012 election seem almost friendly.



1888 Puck cartoon

THE PHOTOGRAPHY PROJECT: A SOUTHERN ILLINOIS PARTNERSHIP EXHIBIT

curated by Bob DeHoet

Exhibit: September 28 – December 8

Reception: November 9, 4 – 7 p.m.

Photographs by high school students from Cobden, Elverado, Eldorado, Zeigler-Royalton, and students from Shawnee Community College on the themes of Every Picture Tells A Story, Altered Realities, or Sense of Place.



Raenna Hodges, Elverado HS, *Sunflower Birdfeeder*, 2012

SALVADOR DALI'S PLAYING CARDS SUITE

Exhibit: November 2 – March 29, 2013

Reception: November 9, 4 – 7 p.m.

Flamboyant Spanish artist Salvador Dalí (1904-1989) created a series of playing cards in 1971. The Museum owns eight large lithographs: the Ace, King, Queen, and Jack in diamonds and spades.



Salvador Dalí, *Jack of Diamonds*, lithograph, edition # 63/150, 1971, © Salvador Dalí, Fundació Gala-Salvador Dalí, Artists Rights Society (ARS), New York 2012.

THE MITCHELL COLLECTION OF SMALL METAL TREASURES

Exhibit: August 16 – December 8

Polly Winkler-Mitchell's mother collected many metal miniatures and passed them on to her daughter. Polly and her husband, Marion Mitchell, have added to this nostalgic collection over the years.

MASTERS OF FINE ARTS CANDIDATES' PREVIEW

Exhibit: November 9 – December 8 | Reception: November 9, 4 – 7 p.m.

Each year MFA candidates preview their thesis exhibits for their faculty and the public. Come see the latest work from SIU students who will graduate in 2013.

THE KILENGE: ANTHROPOLOGICAL FIELDWORK BY DR. PHILIP DARK AND DR. JOEL MARING

curated by Lori Huffman and Kristi Lueker

Exhibit: June 12 – ongoing

The Kilege are native to the island of New Britain near what is now Papua New Guinea. SIU anthropologists Philip Dark and Joel Maring traveled to New Guinea, took documentary photographs, and brought back some artifacts in order to tell their story.

EXHIBITIONS **SPRING2013**

DAVE GILMORE, 1980–1990: TEN YEARS OF MY LIFE

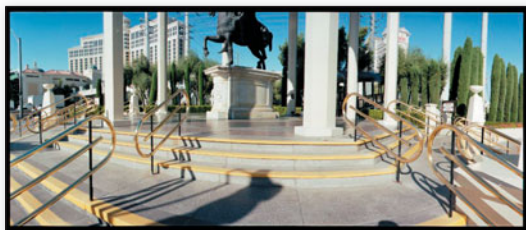


Exhibit: January 22 – March 8 | Reception: February 8, 4 – 7 p.m.

Dave Gilmore's *Ten Years of My Life* exhibit explores a wide variety of subjects and photographic techniques, which will come as no surprise to those who knew him as a professor at SIU. For this exhibit, he divides his work into three categories: Vegas – large color prints of Sin City; Custom Cars – black and whites; Small Towns in Southern Illinois – panoramic views such as Benton, below.



JUNIOR DUCK STAMP EXHIBIT

Exhibit: April | Program Date: April 13 (tentative)

MFA THESIS EXHIBITS

Exhibit: March 19 – May 10

100TH ANNIVERSARY OF UNIVERSITY HOUSING

curated by Eric Jones

Exhibit: January 22 – March 8

Reception: February 8, 4–7 p.m.

In 2013, SIU celebrates the 100th anniversary of University Housing. The Museum is still actively collecting artifacts for the exhibit. If you have something you would like us to consider, please contact Eric Jones at 618/529.3092.

The women students who called Anthony Hall home in 1913–1914.
(From the 1914 *Obelisk*, the first issue of this yearbook.)

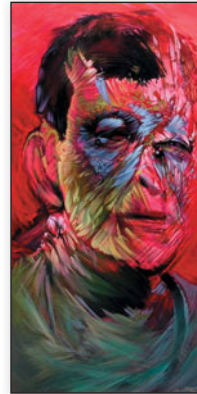
**TOPOGRAPHIES: PAINTINGS AND SCULPTURE BY TATTOO ARTISTS**

curated by Lonnie Mann and Nate Steinbrink

Exhibit: January 22 – March 8

Reception: February 8, 4–7 p.m.

Topographies is an exhibition of paintings and sculpture from contemporary tattoo artists that celebrates and documents a diversity of artistic expression. Tattoo icons featured will be Guy Aitchison, Scott Campbell, Chris Dingwell, Jason Brooks, Eric Doyle, Nick Baxter and Russ Abbott.



Chris Dingwell, *Damnit Jim, I'm a Doctor, not Frankenstein!* 2011

KAREN LINDUSKA: MARSHLANDS - WORKS IN FIBER

Exhibit: March 22 – May 1

Reception: April 5, 4–7 p.m.

Karen Linduska has been working with fiber since childhood. At SIU, she studied under M. Joan Lintault. Today she is a full time fiber artist, author, and teacher.



Karen Linduska, *Dandelions*

RECENT DONATIONS: FINE ARTS

Exhibit Dates: January 22 – March 8

Reception Date: February 8, 4–7 p.m.

Photographs, watercolors, sculpture, and a piece from a sculpture that stood between the World Trade Center towers are all featured in this exhibit of recent gifts to the Museum.



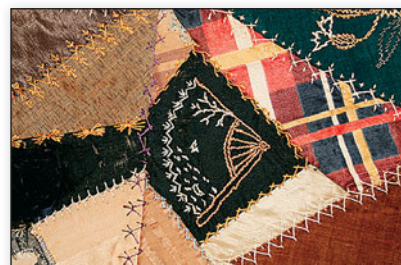
Susie Phillips, *Sunflowers*

RECENT DONATIONS: HISTORICAL OBJECTS

Exhibit: January 22 – March 8

Reception: February 8, 4–7 p.m.

Recent donations of historical objects include an 1890's crazy quilt (detail shown at right) donated by Polly Winkler-Mitchell and Marion Mitchell.



EXHIBITIONS **SUMMER 2013**

LEE BENZ AND ELDON BENZ

Exhibit: June – August 24

Reception: to be announced

An interesting mother/son exhibition is planned for summer 2013. Lee Benz (1918–1986) was a talented artist working in several media. A fire destroyed many of her artworks, which led her son, Eldon Benz, to use his computer skills and education in art (from SIU) to digitize and reprint the works. This exhibit will feature both originals and restored works by Lee and sculptures by Eldon.



Eldon Benz, *Untitled*



Lee Benz, *Moonflowers*, scanned by Eldon Benz

MUSEUM **EVENTS**

Friday, November 9, 4–7 p.m.

The holidays are upon us and you'll find all kinds of treasures in the MFA Preview Exhibit and in Holiday Specials in the store. Tonight's reception will also open Salvador Dali's *Playing Cards Suite*.

2013

Please note: dates can change this far in advance. Check out the Museum's website, www.museum.siu.edu, or call us 618/453.5388 to be sure of dates.

Friday, February 8, 4–7 p.m.

Meet photographer Dave Gilmore at his three-part photography exhibit — part Southern Illinois, part automobiles, part Vegas. Also, take a nostalgic trip through the 100-year history of campus housing. And, add a little spice to your life with the best of Tattoo Art. All in one place!

Friday, April 2, 4–7 p.m.

Public reception for Karen Linduska's fiber arts exhibit.

Summer Reception, to be announced

Lee Benz & Eldon Benz.

Sunday, December 2, 2 – 4 p.m.

Location to be determined.

Christmas Tea (and coffee and a little sherry) for Museum Patrons. Enjoy holiday music, sneak previews of works you'll see in Spring 2013 exhibits, and special door prizes. RSVP to the Museum at 618-453-5388 by November 26. Guests are welcome.

Not a Museum Patron, yet? Just send your dues in the enclosed envelope.



EXHIBITION PROGRAM

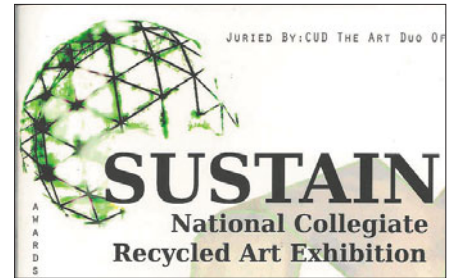
Nate Steinbrink, Curator of Exhibits



Frederick Hart's spiritual and celestial bodies, on loan from Jay and Teresa Means, glow in the quiet ambiance of the Mitchell Gallery.

A continuing effort to make a greener Museum has created an engaging partnership with Museum Studies students. Graduate student Dave Gugerty (MPA, 2012) helped begin our green movement by writing the Museum's first proposal to the University's Green Fund. His successful proposal brought energy-saving LED lighting to the North Hall of the Museum.

The second successful proposal written by Elissia Kimball (BA, 2012), created *Sustain: A National Collegiate Recycled Art Exhibition*, which ran from February 3 to March 9, 2012. This exhibition featured ecologically minded art from fourteen college artists from as far away as California.



Nate Steinbrink and College of Liberal Arts Dean Kimberly Leonard visit at a reception.

EDUCATION PROGRAM

Bob DeHoet, Museum Education Program Director

In Summer 2012, the University Museum opened its Continuum Gallery. "I see it as an ideal place to feature the work of area students," says Bob DeHoet. The gallery hosts an exhibit of photography from five area schools this fall. High school students from Cobden, Elverado, Eldorado, Zeigler-Royalton and students from Shawnee Community College took photographs conveying personal meaning. A virtual version of this exhibit will be seen on the Museum's website.

Since 1999, the University Museum (home to a 25,000 specimen fossil collection) and the SIUC Department of Geology have coordinated the Young Earth Scientists (YES) project, which continued this year with over 100 fourth grade students from Ellis Elementary in Belleville. Project Directors Bob DeHoet and Harvey Henson, from the College of Science, are working to expand the project to several additional Southern Illinois schools in 2013.

At the November 3 annual conference of the Illinois Art Education Association in Lisle, Bob DeHoet will team with other museum educators in a discussion about museum and school collaborations.

The 26th Arts Education Festival, April 18–19, 2012, brought over 2,000 students and their teachers to campus for a daylong immersion into the arts. The School of Art & Design and the School of Music were heavily featured in the activities, as were community groups such as the Suzuki Strings, the Susan Barnes Dance Company, and the Dorians. The students came from the following Southern Illinois towns: Carbondale (786 students), Chester (31), Christopher (221), Cobden (40), Dix (92), Dongola (108), Herrin (189), Marion (73), Murphysboro (136), Steeleville (44), Vienna (42), Vergennes (46). **The 27th Arts Education Festival is April 17 & 18, 2013.**



Museum Studies student Rachael Huszar at the 2012 Arts Education Festival.



Rainbow's End student at a Museum workshop.



Bob DeHoet and kids in a workshop.

COLLECTIONS PROGRAM

by Lori Huffman, Curator of Collections

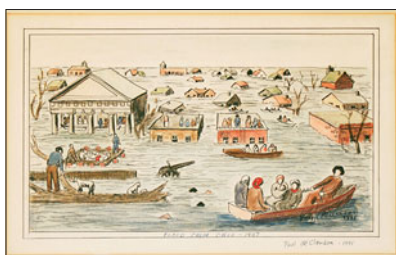
RECENT ACQUISITIONS



Chinese boat model collected by William Marberry, the campus's first landscape designer, donated by his sister Alice Limpus.



A George III Old Sheffield Plate coffee pot donated by Iver Nelson, Jr.



Watercolor of a Shawneetown, Illinois, flood scene by Paulus McClendon, donated by Lana Newboles.

ALICE MARBERRY LIMPUS, a long time Museum Patron, has helped the University Museum document the exciting life of her late brother, William Marberry, who served the campus as its first landscape designer. During World War II Mr. Marberry served in India, Burma, and China. He collected Oriental art on these trips including the model boats Alice recently donated to us.

DR. JEROME "JERRY" MILEUR (SIU Ph.D. 1971 Political Science) gave his wonderful collection of Presidential Campaign Memorabilia to the Paul Simon Public Policy Institute and the University Museum in 2008. Jerry has continued to add to this collection, gifting us with many historical cartoons from American political magazines. This Fall you'll see some of that past satire in an exhibition. In February 2013 we will also exhibit Lincoln objects from this growing collection.

Since the 1970s, historians and collectors, **POLLY WINKLER-MITCHELL** and **MARION MITCHELL** of Carbondale, have been an invaluable resource to the Museum as consultants on Southern Illinois and University history, and as donors to the collection. The Mitchells recently donated an 1890s crazy quilt.

Long-time collector **IVER NELSON, JR.** of Chicago has given a number of objects to the Museum from his private collection since 2008. His collections include English antique silver, Chinese ceramics as well as paintings, prints and drawings. Mr. Nelson's donations to the University Museum include a number of artworks: an Alexander Calder print, ethnographic artifacts including Zuni jewelry, antique maps of Europe, as well as a number of English silver pieces dating as early as 1785. A George III Old Sheffield Plate coffee pot will be on display at the Museum in January 2013.

LANA NEWBOLES of Evansville, Indiana, called the Museum in 2011 to see if we would have an interest in ten watercolors and two oil paintings by Illinois artist Paulus McClendon collected by her late father, Lane Anderson. The watercolors depict both "Old" and "New" Shawneetown and other Saline County scenes. The watercolors appear to have been a proposed series for the Works Progress Administration's Federal Art Project.

Nationally renowned sculptor **HERBERT SIMON** of Shavertown, Pennsylvania, recently donated, an aluminum and rusted steel sculpture titled *Spill*, which he created in 1990. He taught at Wilkes University (Wilkes-Barre, PA) from 1969–1992, has exhibited in a variety of venues since 1955, and has his works represented in a number of collection across the county. The Friends of the Museum made this donation possible by paying for shipping costs. This sculpture, shown on the cover, will be on display at the Museum in January 2013.

The **E. MARK ADAMS AND BETH VAN HOESSEN ADAMS TRUST** of San Francisco, California, has donated 19 works by **BETH VAN HOESSEN** to the Museum. Ranging from self-portraits to flowers and animals, these works are in a variety of media. The animal artworks can be seen in the current exhibit, *Lions & Tigers & Bears, Oh My!*, curated by Rachel Fischhoff of Carbondale. A variety of Ms. Van Hoesen's poppies will be seen in the *Recent Donations: 2010-2012* exhibit on display at the Museum in January 2013.

Donors 2011–2012

Corporate Donors – Platinum

Contributions of \$5,000 or more

Wells Fargo Advisors, Carbondale, IL

Gold Patrons

Contributions of \$500 or more

Dona Bachman and Aldon Addington, Carbondale, IL

Rachel and Stuart Fischhoff, Carbondale, IL

Patricia Guyon, Carbondale, IL

Robin and John Haller, Carbondale, IL

Jo and Ted Harvey, Kent, OH

Gayle Klam, Carbondale, IL

Jerome M. Mileur, Hadley, MA

Blanche Sloan, Carbondale, IL

Patrons

Contributions of \$100 or more

Laura and Gene Basanta, Murphysboro, IL

Barbara Blacklock

Ellen and Richard Bradley, Carbondale, IL

Dominick Buttiglieri, Lancaster, PA

Rita Cheng and Thomas Cheng, Murphysboro, IL

David Christensen, Carbondale, IL

Gloria Corder, Murphysboro, IL

Lilly E. Crane, James R. Cather, Carbondale, IL

SNAPSHOTS



Row 1, left to right: John “Duff” Medwedeff, Bob DeHoet, and Lori Huffman at a reception. Jerry Mileur speaks at the Union League Club in Chicago. Shaina Graff and Dr. Eric Lenz performed for the Wells Fargo Advisors receptions for *American Spirit*. Molly Johnson and Rachel Fischhoff admire children’s art in *Lions & Tigers & Bears, Oh My!*. SIU Mascot Grey Dawg (Wes Stoeger) says “Measure twice, cut once.” Row 2, left to right: Southern Illinois Association of Museums President Margaret Loomis, center, presents SIU students Sarah DePuy and Sarah Attutis Cain with Outstanding Museum Student awards. The *Art Alfresco* brochure was sponsored by Carbondale Community Arts and Friends of the University Museum. Trish Guyon, Carol Good, and Susie Phillips at a reception. Greg Kupiec and Blanche Sloan at a reception.



Who are these people?

Pick the correct caption to identify this photo:

- A Models for a future clothing exhibit
- B Former Museum staff members found in the Archive
- C Ozark Folk Dolls photographed as part of the IMLS Grant

Answers:
A No, Lori Huffman, who will mount the clothing exhibit in 2013.
B Yes, the University Museum never had so many employees in its nearly 140 year history.
C Yes, photographs of 4,000 objects in the collection will be available online in 2013, if none of these Superstition Dolls put a curse on us.

Laura and Bryan Cobin, DuQuoin, IL
Susan Felleman and Peter Chametzky, Carbondale, IL
Sandy and David Gobert, Carterville, IL
Carol and Larry Good, Carbondale, IL
Lori Huffman, Anna, IL
Candis and Fred Isberner, Carbondale, IL
Dede Ittner, Carbondale, IL
Cheonae Kim, Murphysboro, IL
Elissia Kimball, Carbondale, IL

Diana and Brent Kington, Makanda, IL
Barbara Lesar, Carbondale, IL
Zoe Lightfoot and Harland Taylor, Carbondale, IL
Kristine and Patrick McGuire, Carbondale, IL
Polly Winkler-Mitchell, Marion Mitchell, Carbondale, IL
Ron Naversen, Makanda, IL
Helen Naumer, Murphysboro, IL
Anne and Nicholas Phillips, Carbondale, IL
Susie and Ed Phillips, Murphysboro, IL

Jo and Glenn Poshard, Murphysboro, IL
Barbara Jane Schwartz, Makanda, IL
Connie and Mike Shanahan, Carbondale, IL
Emma Smith, Carbondale, IL
Carolyn Snyder, Carbondale, IL
Judy and Will Travelstead, Cobden, IL
Joyce Webb, Carbondale, IL
Olga Weidner, Carbondale, IL
Laraine Wright, Carbondale, IL



GIFTS AT THE UNIVERSITY MUSEUM STORE

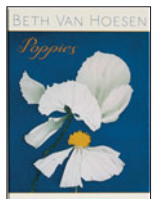
*Watch for special holiday sales
beginning in November*

Museum Reproductions are back!

Authorized reproductions from the most prestigious
museum collections around the world.



Pin: Greek geometric horse statuette
(original: 750-700 BCE) from The
Cleveland Museum of Art



Cards featuring art by Beth
Van Hoesen, whose works
are currently on exhibit in the
Museum

*As a steward of the past and a gateway to the future,
the Museum Store embodies sensitivity to other cultures
and concern for sustainability. Many of the Museum Store's
major sources are members of the Fair Trade Federation.*



Tominik Plunkett, museum
student assistant, models a
foot-loomed scarf from
Guatemala.